

System No. WW-D-1036



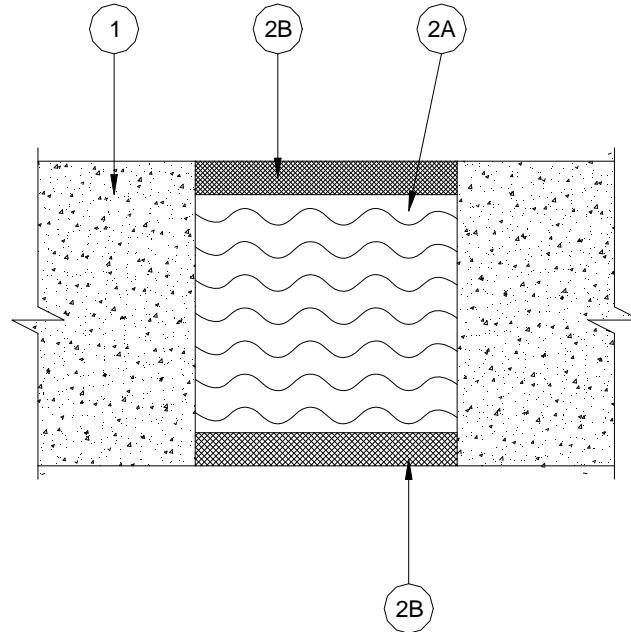
Assembly Rating - 3 Hr

Nominal Joint Width – 4 In.

Class II Movement Capabilities – 15.6% Compression or Extension

L Rating At Ambient – Less Than 1 CFM / Lin. Ft.

L Rating At 400°F – Less Than 1 CFM / Lin. Ft.



1. **Wall Assembly** - Min 4-1/2 in. thick steel-reinforced lightweight or normal weight (100-150 pcf) structural concrete. Wall may also be constructed of any UL Classified **Concrete Blocks***.

See **Concrete Blocks** (CAZT) category in the Fire Resistance Directory for names of manufacturers.

2. **Joint System** – Max width of joint (at time of installation of joint system) is 4 in. The joint system is designed to accommodate a max 15.6 percent compression or extension from its installed width. The joint system shall consist of the following:

- A. **Forming Material*** - Min 4.0 pcf mineral wool batt insulation installed in joint opening as a permanent form. Min 3-3/4 in. thickness of batt insulation cut to the appropriate width and installed into joint opening such that the batt sections are compressed min 33 percent in width and such that the compressed batt sections are recessed from both surfaces of wall to accommodate the required thickness of fill material. Adjoining lengths of batt insulation to be tightly-butted with butted seams spaced min 48 in. apart along the length of the joint.

FIBREX INSULATIONS INC. – FBX Safing Insulation
OWENS CORNING HT INC., DIV OF OWENS CORNING - Safing Insulation / MW
ROCK WOOL MANUFACTURING CO. – Safing Board
ROXUL INC – SAFE Mineral Wool
THERMAFIBER LLC - Type SAF

- B. **Fill, Void or Cavity Material*** - Min 1/4 in. depth of fill material applied within the joint, flush with both surfaces of wall.

NUCO INC. - Self Seal GG-200 Sealant

* Bearing the UL Classification Mark

