

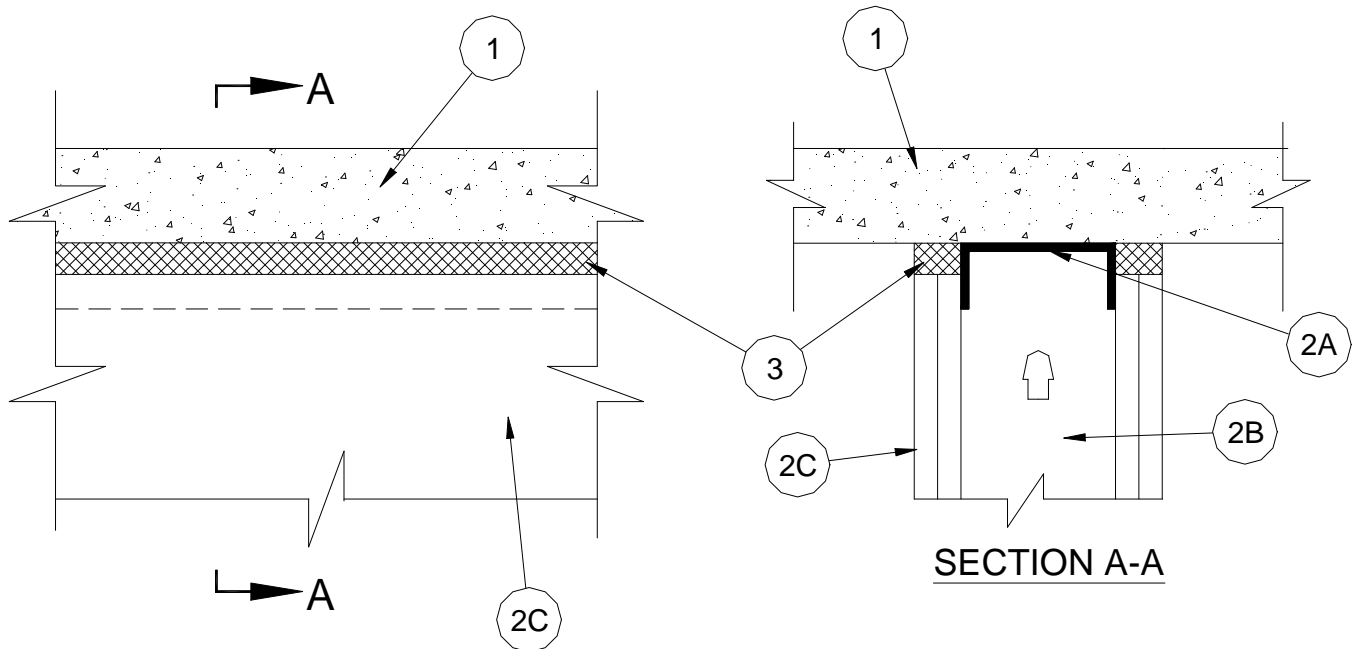
System No. HW-S-0060



Assembly Ratings - 1 and 2 Hr (See Item 2)

L Rating At Ambient – Less Than 1 CFM / Lin. Ft.

L Rating At 400°F – Less Than 1 CFM / Lin. Ft.



1. **Floor Assembly** - Min 4-1/2 in. (114 mm) thick reinforced lightweight or normal weight (100-150 pcf or 1600 – 2400 kg/m³) concrete.
2. **Wall Assembly** - The 1 or 2 Hr fire-rated gypsum wallboard / steel stud wall assembly shall be constructed of the materials and in the manner specified in the individual U400 Series Wall and Partition Designs in the UL Fire Resistance Directory and shall include the following construction features:
 - A. **Steel Floor and Ceiling Runners** - Floor and ceiling runners of wall assembly shall consist of galv steel channels sized to accomodate steel studs (Item 2B). Ceiling runner is secured to bottom of floor with steel masonry anchors spaced a max of 24 in. (610 mm) OC.
 - B. **Studs** – Steel studs to be min 3-5/8 in. (92 mm) wide. Studs attached to ceiling runner with sheet metal screws. Stud spacing not to exceed 24 in. (610 mm) OC.
 - C. **Wallboard, Gypsum*** - Gypsum board sheets installed to a min total thickness of 5/8 in (16 mm) and 1-1/4 in. (32 mm) on each side of wall for 1 and 2 Hr rated assemblies, respectively. Wall to be constructed as specified in the individual Wall and Partition Design in the UL Fire Resistance Directory, except that a max 1 in. (25 mm) gap shall be maintained between the top of the gypsum board and the lower surface of the floor. **The hourly fire rating of the joint system is dependent on the hourly fire rating of the wall.**

3. **Fill, Void or Cavity Material* - Sealant** - Max separation between bottom of floor and top of wall is 1 in. (25 mm). Min 5/8 in. (16 mm) or 1-1/4 in. (32 mm) thickness of fill material for 1 and 2 Hr rated assemblies, respectively, installed on each side of the wall between the top of the gypsum board and bottom of floor, flush with both surfaces of wall.

NUCO INC. - Self Seal GG-200

* Bearing the UL Classification Mark